



WELCOME BACK!

THE RULES HAVE
CHANGED



ACADEMICS



**ATTENDANCE IS
CRUCIAL!**



DO YOU
REALLY NEED
TO REPEAT
EVERYTHING
YOU HEAR?

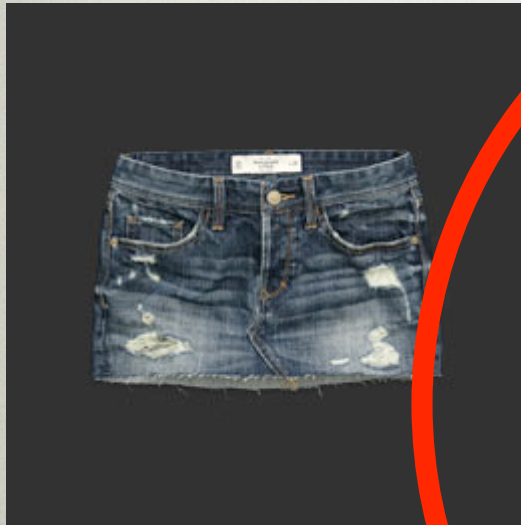


WHAT ARE
PROPER
CLOTHES TO
WEAR TO
SCHOOL???

AND JUST AS IMPORTANT
WHAT ARE NOT?



APPROPRIATE CLOTHING ?





**SHIRTS MUST
HAVE
SLEEVES**



**SHIRTS MUST
COVER THE BACK
AND HAVE
SLEEVES**



**SHIRTS MUST
HAVE SLEEVES**



**SHIRTS MUST HAVE
SLEEVES THAT COVER
SHOULDERS**

**SHIRTS SHOULD COVER
FROM ARMPIT TO
ARMPIT WHEN CUT AT
THE NECKLINE**





**IF JEANS ARE TORN, HOLES MUST BE
BELOW MID-THIGH**



**SHORTS AND SKIRTS
MUST REACH MID-THIGH**



NO HATS AFTER 7:40



T-Shirt Slogans Must Be School Appropriate



**JEANS MUST BE WORN
APPROPRIATELY AND
COVER UNDERWEAR**